

Safety Indicators

for Individuals with Intellectual/Developmental Disabilities

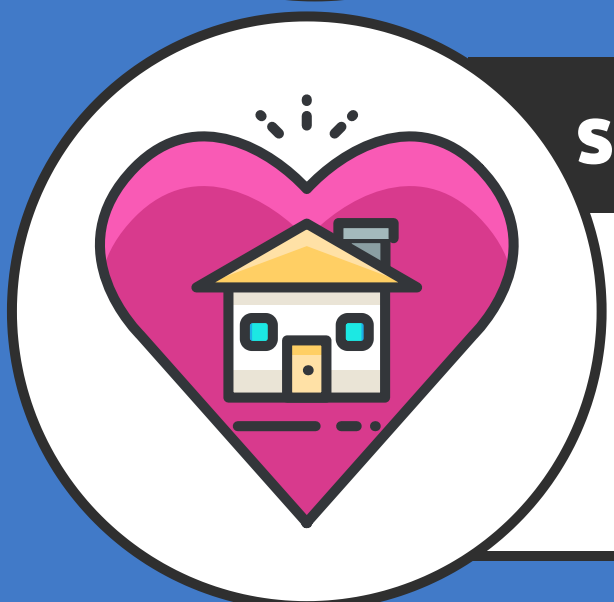


Disaster Preparedness

83%

of the individuals with I/DD DO NOT KNOW what to do and can not evacuate without assistance during a major disaster (earthquake, fire, etc).

1029 respondents



Safety in the Community

92%

of survey participants are concerned about safety issues in the community.

994 respondents

Safety Issues for Families and Self-Advocates with Intellectual/Developmental Disabilities

Typical Families

- Bullying/cyberbullying (61%)
- Not enough exercise (60%)
- Unhealthy eating (57%)
- Drug abuse (56%)
- Internet safety (55%)
- Child abuse and neglect (53%)
- Suicide (45%)
- Depression (44%)
- Teen pregnancy (43%)
- Stress (43%)

92% of parents and self-advocates are concerned about safety issues in the community.



Families of Children and Adults with I/DD

- Being made fun of or disrespected (71%)
- Bullying (63%)
- Being abused (60%)
- Having a major meltdown or tantrum (55%)
- Will wander or be lured away (55%)
- How to have a healthy relationship (29%)
- May hurt someone (25%)
- Will get arrested or 5150'd (22%)